

TATE MODERN



OUR SPACE. YOUR CANVAS.

TATE EVENTS



# A BESPOKE SERVICE

Creating unforgettable moments in stunning spaces, Tate Events deliver a wide variety of events; from private fine dining and exquisite drinks receptions, film premiers and fashion shows to large scale conferences and meetings. Working closely with the curatorial team, Head Chef Spencer Ralph designs our menus around the themes of our exhibitions and displays. It's about more than just flavours; all our ingredients are sustainably sourced and are of the highest quality.



## OUR FOOD

Every season we create new and exciting menus, inspired by British foodie trends, flavours and style. We strongly believe in sourcing the best produce and have strong relationships with local suppliers; as well as bringing in unique one off ingredients to give your event that touch of luxury or just to make it really special.

Our Head Chef, Spencer Ralph, heads a team of dedicated event chefs who have a wealth of experience in both the events industry and top London restaurants. They work closely with you and your dedicated Tate Event Planner to develop a menu for your guests.

## OUR DRINKS

Long has spectacular food been fundamental to wowing your guests; however Tate Events have always placed an equal amount of importance on beverages. As well as a wealth of knowledge about what is available on the market, our drinks buyer has collaborated with beer, gin and soda suppliers to create our own innovative Tate blends. We know that at the heart of every event is the desire to make it as memorable as possible and using unique seasonal flavours with the latest production techniques to create exclusive drinks all contribute to the custom-made atmosphere we like to achieve.

## OUR SPACE. YOUR CANVAS.

## OUR STYLE

Our team of experienced and creative Event Planners are tapped into the current entertaining trends and finishes that make an event special. Working with trusted suppliers, the styling, design and concepts are exhibition inspired and bespoke for your celebration. Listening to our clients and working closely with you to create a truly spectacular event is what we enjoy doing. We understand that the approach for each and every event is different!

## OUR COMMITMENT

Tate Events is made up of a team of people who are truly passionate about events, and the reason we do what we do with such dedication, is the greater

contribution that we make to society, in being able to support Tate to advance its world class programmes and enable people to explore the many ways in which art is created and plays an important role in community and society. At Tate preserving the collection for future generations means that sustainability is at the very heart of all we do. We work to bring you exceptional experiences whilst keeping the planet in mind.

Our chefs create seasonal menus using local and sustainable suppliers, and at times use fully foraged, 'ugly' vegetables to help reduce waste. We ensure minimal food waste and are proud to have made investments to replace single use alternatives.





# THE TURBINE HALL & BRIDGE

The Turbine Hall and Bridge is one of our most impressive spaces, and has hosted some of the world's most memorable and acclaimed works of contemporary art. For added 'wow factor,' its spacious, post-industrial setting is ideal for a larger gathering or evening event.

Tate corporate supporters have the exclusive opportunity to entertain here. The Bridge which spans The Turbine Hall is available throughout the year, offering a panoramic view of the entire space.

## CAPACITIES - THE TURBINE HALL BRIDGE

Reception: 800  
Dining: 400

## CAPACITIES - THE TURBINE HALL

Reception: 1,200  
Dining: 700



# THE EAST ROOM

One of our most popular spaces, the defining feature of this bright and airy room is its stunning panoramic views of the London skyline. This open, modern space is ideal for daytime meetings and evening receptions and dinners.

During the day, it is flooded with natural daylight, bright and airy; at night the city lights make the view unforgettable.

## CAPACITIES

Presentation: 100

Reception: 150

Dinner: 100







# THE LEVEL 10 VIEWING TERRACE

This is a unique chance for your guests to sit proudly atop the gallery that has so significantly shaped enjoyment of contemporary art. The Viewing Terrace is the ultimate reception space for events, including incredible views of London. This space with a beautiful external terrace is perfect for standout dinners.

## CAPACITIES

Reception: 150  
Dinner: 80



# KITCHEN & BAR

When the sun sets over the River Thames, there are few places better to be than Kitchen & Bar atop Tate Modern's Natalie Bell Building. This bustling restaurant transforms into a sleek and stylish space with floor-to-ceiling windows and a specially commissioned mural by a contemporary artist.

It is a spacious and completely flexible venue for a reception or dinner.

## CAPACITIES

Reception: 300  
Dinner: 200  
(Subject to format)

OUR SPACE. YOUR CANVAS.







# STARR CINEMA & FOYER

For an event with added sparkle, the heart of Tate Modern is one of London's largest and most luxurious screening rooms. Fully equipped with state-of-the-art digital projection and audio (two in-house AV techs included), the Starr Cinema has everything you need for a presentation or screening for over 200 guests.

Complementing the auditorium is the Starr Cinema Foyer, perfect for registration, catering, breakouts and receptions. Half day rates are available.

## CAPACITIES

Presentations: 234  
Refreshments: 150



OUR SPACE. YOUR CANVAS.



# THE TANKS

An event space exclusively for our Corporate Members, we have The Tanks: The world's first gallery dedicated to live art. Previously used to store oil when the gallery was a power station, these huge circular spaces in the foundations of the gallery provide endless opportunities for truly unique receptions and celebrations.

Extensive arts programme will be enjoyed by our visitors in this space, therefore all corporate entertaining takes place outside of these periods.

## CAPACITIES - SOUTH TANK

Reception: 300

Dinner: 400

Conference: 400

## CAPACITIES - EAST TANK

Reception: 400







# BLAVATNIK BUILDING LEVEL 4

In the heart of Blavatnik Building, Level 4, you and your guests will journey through this iconic surrounding and enjoy a private view of Tate's growing global collection of modern and contemporary visual art.

The combination of the raw and the refined makes this architecturally striking space ideal for receptions for up to 300 guests. Equally, the design of the space is perfect for a smaller private viewing for 30 guests, or even a dinner for up to 200 guests.

For our Corporate Supporters Level 4 Blavatnik Building offers access to our special exhibitions.

## CAPACITIES

Reception: 250  
Dinner: 200  
Private view incl.



OUR SPACE. YOUR CANVAS.



# THE SOUTH ROOM

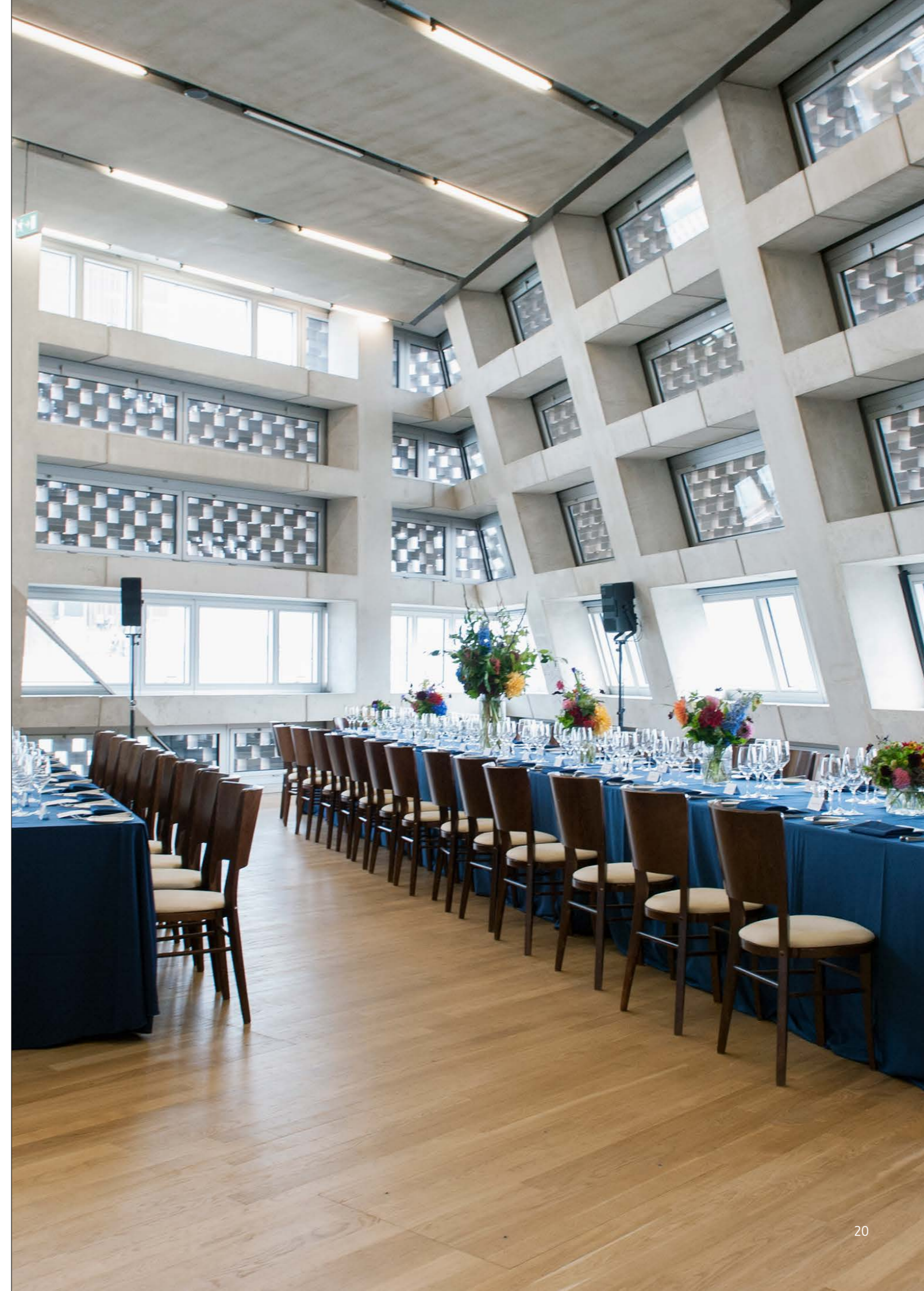
The South Room is Tate Modern's only space dedicated to events. In the heart of Blavatnik Building, this private space gives you the freedom to create an event to suit your bespoke requirements and realise your client engagement needs.

The building's high ceilings and modern architecture can be seen at their best in this space. If you're looking for a light and airy environment hosted by an innovative, forward-thinking organisation, this is the option for you.

## CAPACITIES (Subject to Format)

Reception: 300  
Dinner 200

OUR SPACE. YOUR CANVAS.







# BLAVATNIK BUILDING LEVEL 2

Why not try a striking, architectural design space instead? Blavatnik Building Level 2 enables you to entertain up to 400 guests across the whole area, or, for a more intimate gathering, you can have numbers in the special feature enclaves. This is available exclusively to our Corporate Members.

Entertain on the Level 2 Blavatnik Building and enjoy access to our collection; a growing and truly global collection of modern and contemporary art which connects cultures and societies worldwide.

## CAPACITIES

Reception: 300  
Private view incl.



# THE EYAL OFER LEVEL 3 CONCOURSE

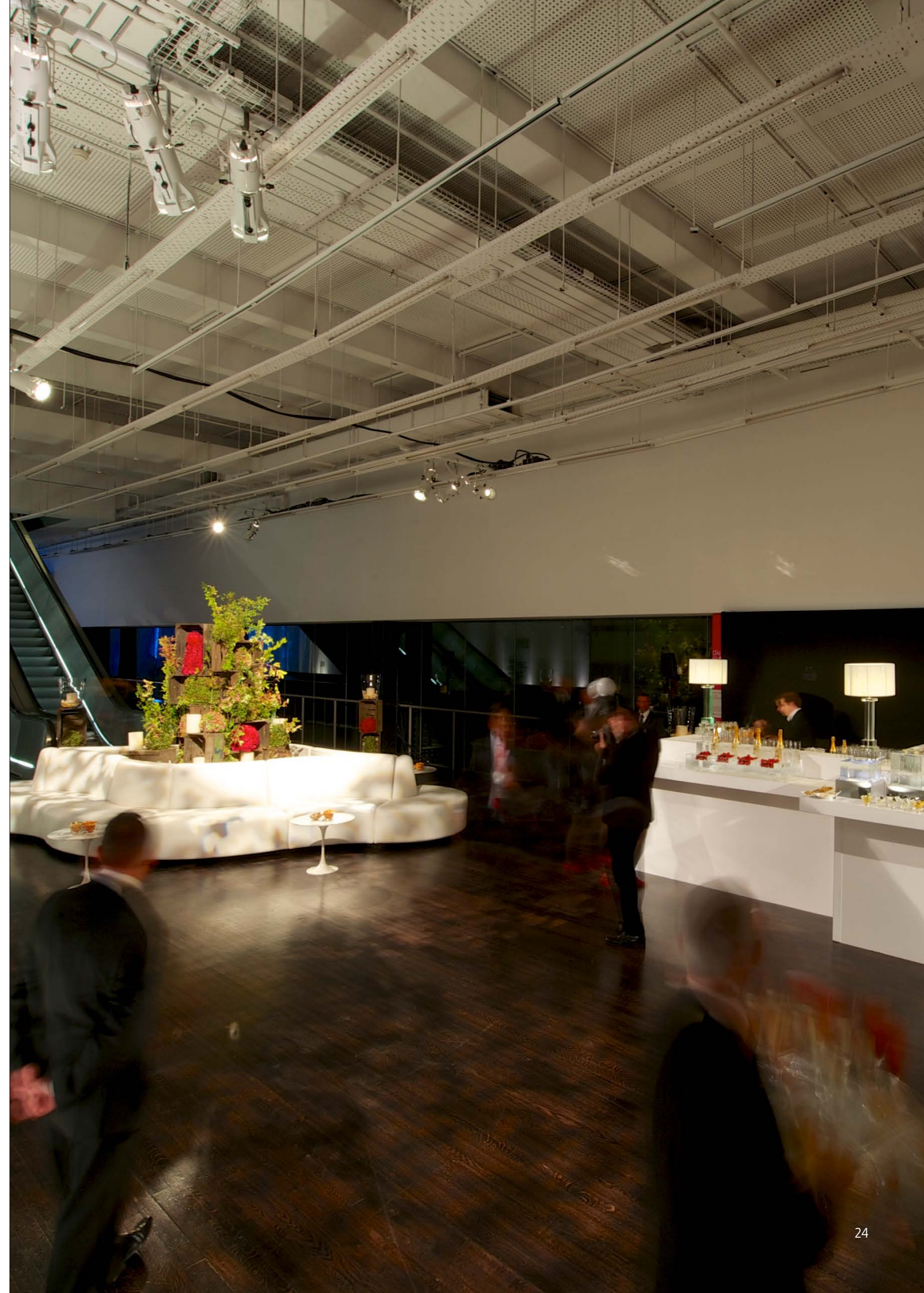
Do you want to offer your guests a truly unique and memorable experience? Giving you access to Tate's world-class exhibitions, the Eyal Ofer Level 3 Concourse is ideal for all your networking and client engagement opportunities.

A special feature of this space is the two intimate alcoves, each with its own balcony overlooking the river. These can be used for smaller events, such as a dinner for 80, or as part of the larger space for receptions for up to 400.

For our corporate supporters, Level 3 offers access to our special exhibitions.

## CAPACITIES

Reception: 300  
Dining: 80







# THE NATALIE BELL LEVEL 2 CONCOURSE

This space has everything that makes Tate Modern unique, from high ceilings, industrial heritage and contemporary art and architecture. If this is the venue for you, it also includes a private viewing opportunity of our world class exhibitions.

## CAPACITIES

Reception: 300  
Private view incl.



# THE MEMBERS BAR

Perfect for unwinding after a long day, our stylish and enviably positioned bar for our Tate Members, boasts two outdoor balconies with stunning views across London and the River Thames.

Inside is relaxed, comfortable but luxurious, with deep sofas and a private bar to hand. A display of vintage posters showcases decades of landmark exhibitions at Tate.

## CAPACITIES

Reception: 120







# THE TANKS FOYER

For an unexpected event choice, nestled under the concrete arch of the statement staircase, The Tanks Foyer is a completely unique and industrial feeling reception space. It's ideal for making special memories for your guests.

## CAPACITIES

Reception: 400



# THE RESTAURANT

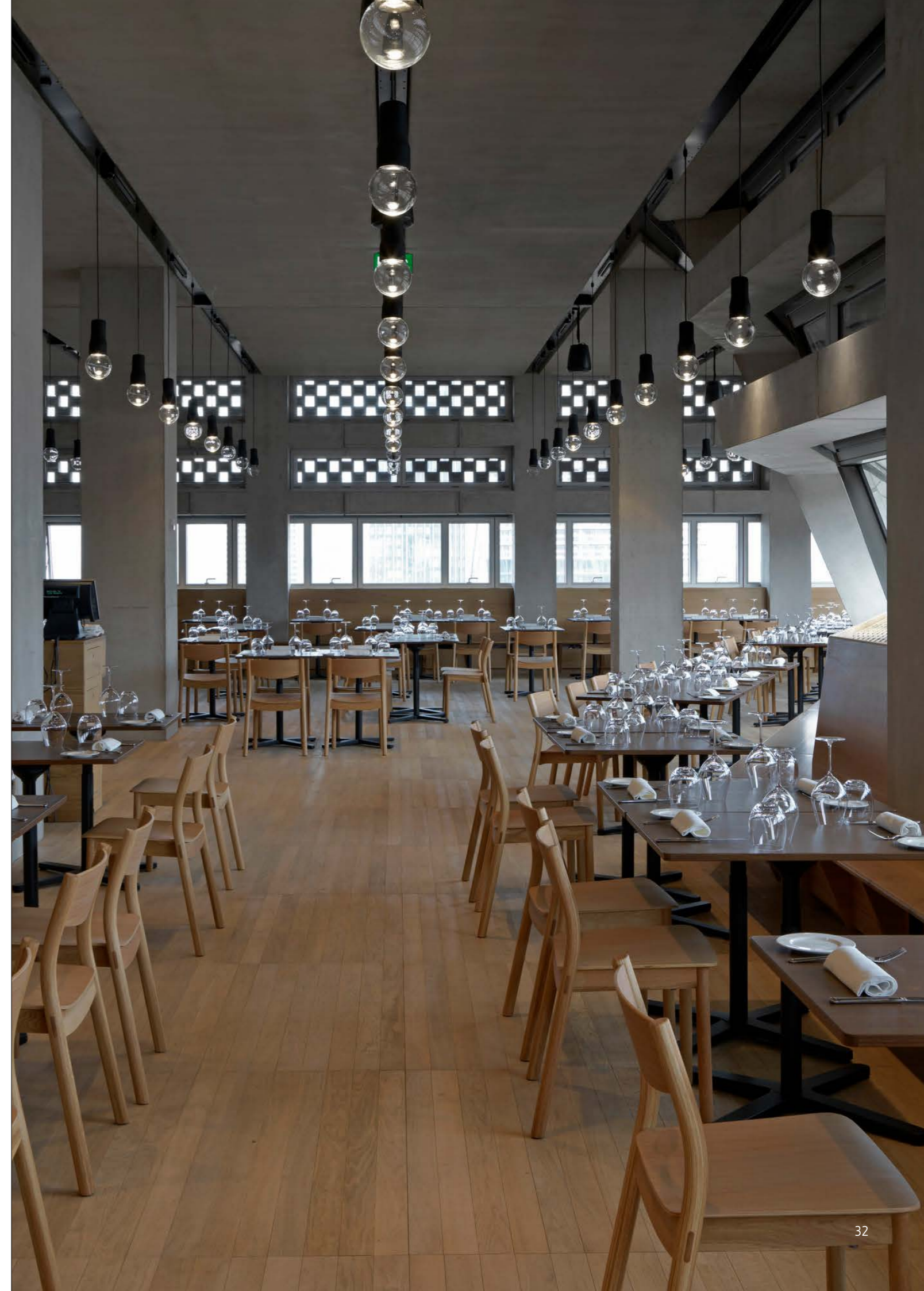
We can't think of a more fitting setting – a sunset glow through beautiful windows – for an exclusive dinner than this inviting space. You and your guests will be served in the heart of where Tate's best food creations are brought to life.

The strong architectural design which runs throughout the whole gallery can be seen at its best in this inviting and welcoming space.

## CAPACITIES

Reception: 200

Dinner: 80







# TATE ART EXPERTS

'ENSURE YOUR GUESTS ARE TAKEN ON A JOURNEY THAT WILL MAKE A LASTING IMPRESSION'

Tate Art Experts come from a variety of professional and academic backgrounds. Invite them to share insights and new perspectives on Tate's varied art collection at your next event.

Whether you want them to lead a tour of the collection, introduce our latest exhibitions, or give a specially written address, their contribution is always tailored to help make your event memorable and engaging.

Their knowledge, appreciation of art and wealth of experience will ensure your guests are taken on a journey that will make a lasting impression.



# TATE GIFTS

'GIVE YOUR GUESTS A MEMENTO FROM TATE'

Create a lasting impression of your event with a memento from Tate.

Give your guests something special to take away, such as items designed exclusively for Tate by artists such as Judy Chicago and Yayoi Kusama. A carefully chosen gift to suit your event, such as a Grayson Perry Scarf or Pierre Bonnard Print, will finish your event with a flourish.